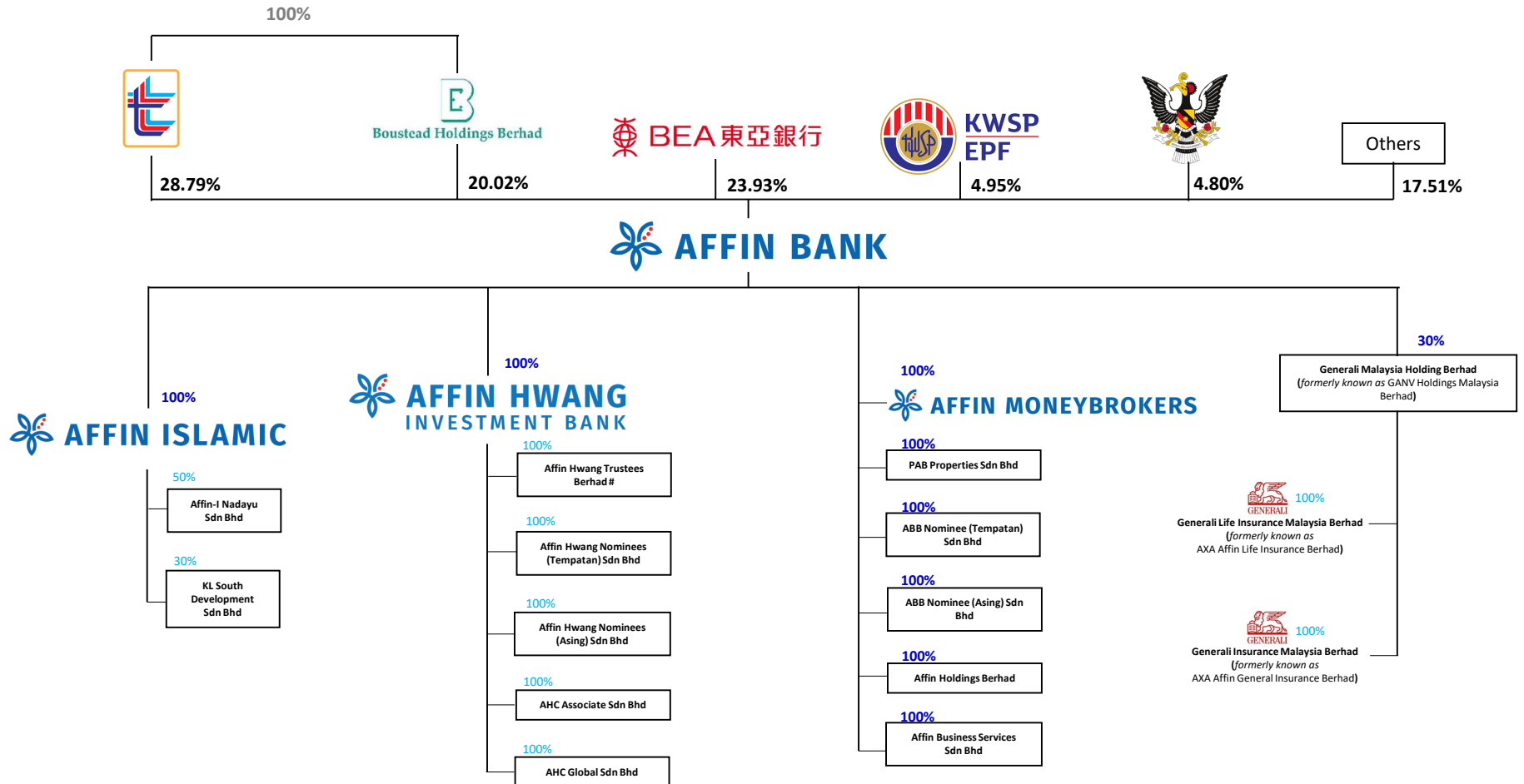


# AFFIN GROUP CORPORATE STRUCTURE AS AT 31 MAY 2024



**Notes:**

1. The companies reflected above are operating subsidiaries and associates.
- # Held by the following companies with direct shareholdings of 20% each
  - a. Affin Hwang Investment Bank Berhad
  - b. Affin Hwang Nominees (Tempatan) Sdn Bhd
  - c. Affin Hwang Nominees (Asing) Sdn Bhd
  - d. AHC Associates Sdn Bhd
  - e. AHC Global Sdn Bhd